




FSAS24 JMH
 301200UTC JUN.2023
 ECST FOR 011200UTC
 24HR SURFACE PROG

 ICING AREA
 SEA ICE AREA
 FOG AREA
 The above labels are used within the band from the equator to 60N between 100E and 180E.

SCALE IN NAUTICAL MILES

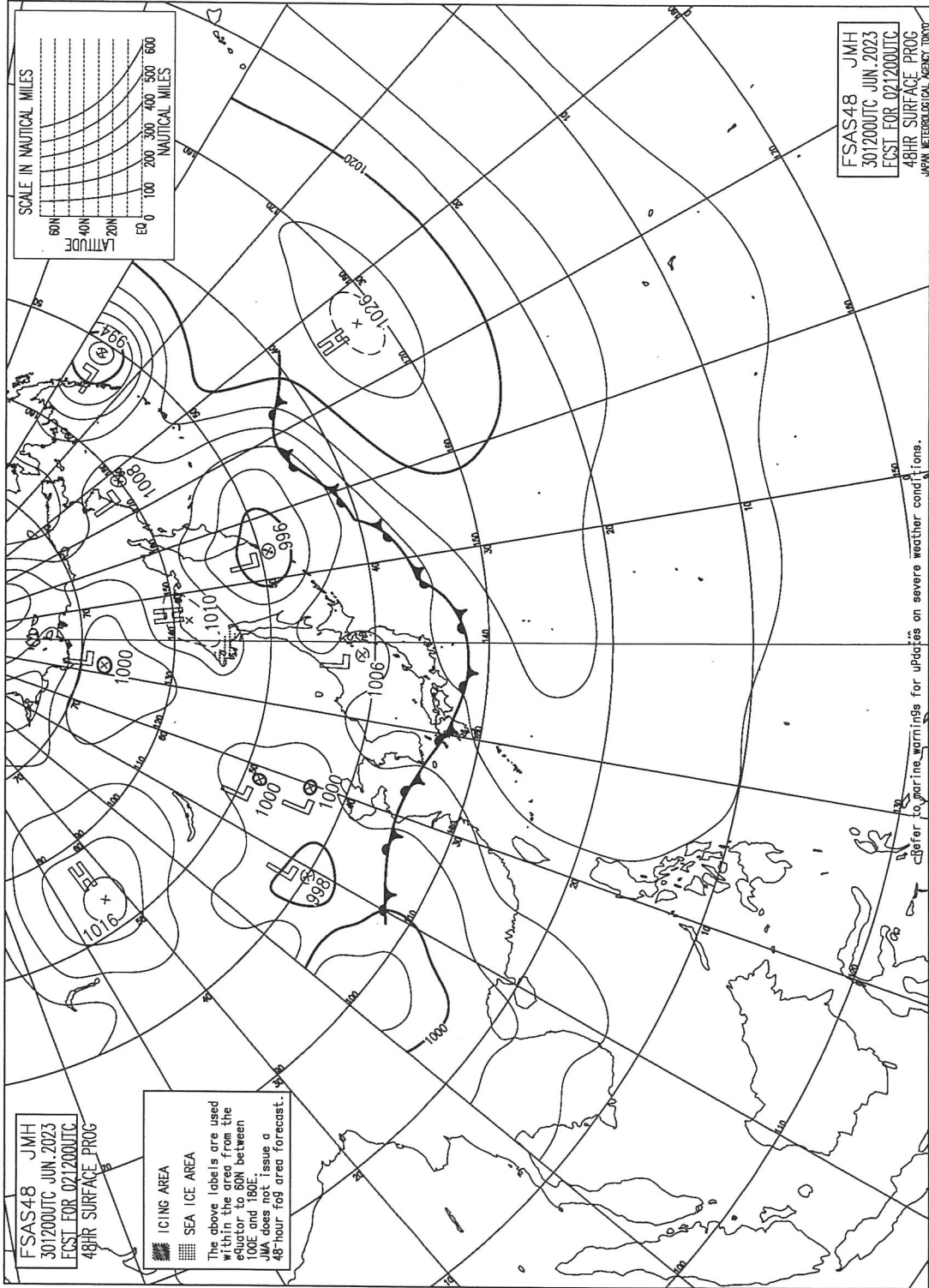
LATITUDE

60N
40N
20N
EQ 0

0 100 200 300 400 500 600
 NAUTICAL MILES

FSAS24 JMH
 301200UTC JUN.2023
 ECST FOR 011200UTC
 24HR SURFACE PROG
 JAPAN METEOROLOGICAL AGENCY TOKYO

Refer to marine warnings for updates on severe weather conditions.

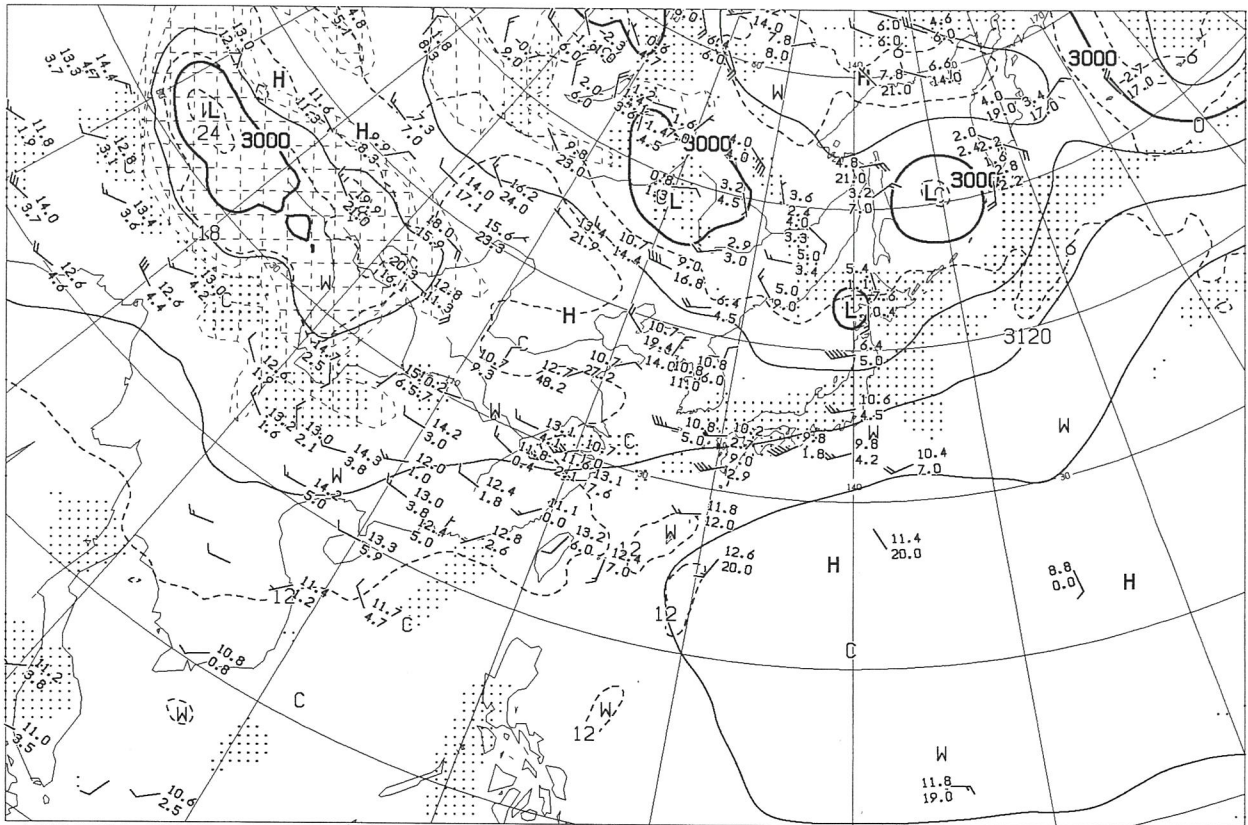


FSAS48 JMH
301200UTC JUN.2023
FCST FOR 021200UTC
48HR SURFACE PROG

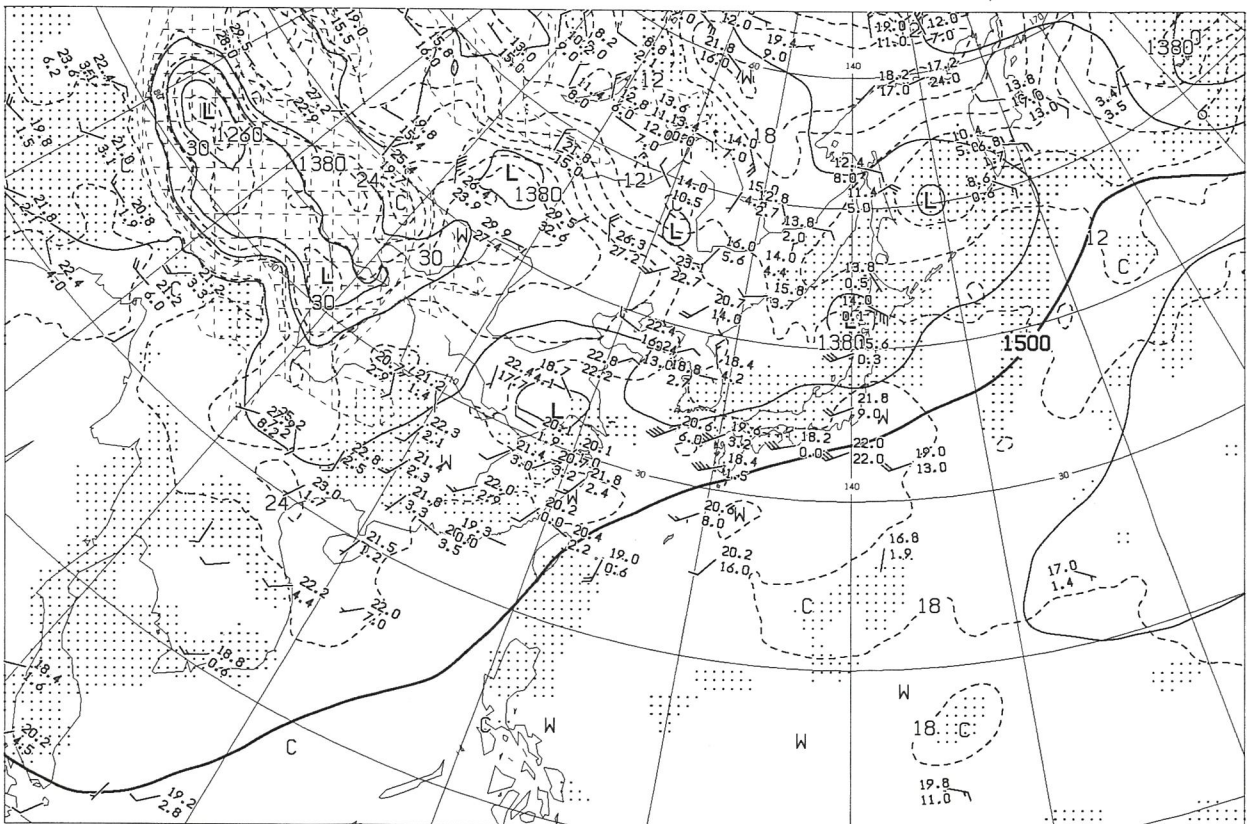
ICING AREA
SEA ICE AREA
The above labels are used within the area from the equator to 60N between 100E and 180E. JMA does not issue a 48-hour fog area forecast.

FSAS48 JMH
301200UTC JUN.2023
FCST FOR 021200UTC
48HR SURFACE PROG
JMA METEOROLOGICAL AGENCY TOKYO

Refer to marine warnings for updates on severe weather conditions.



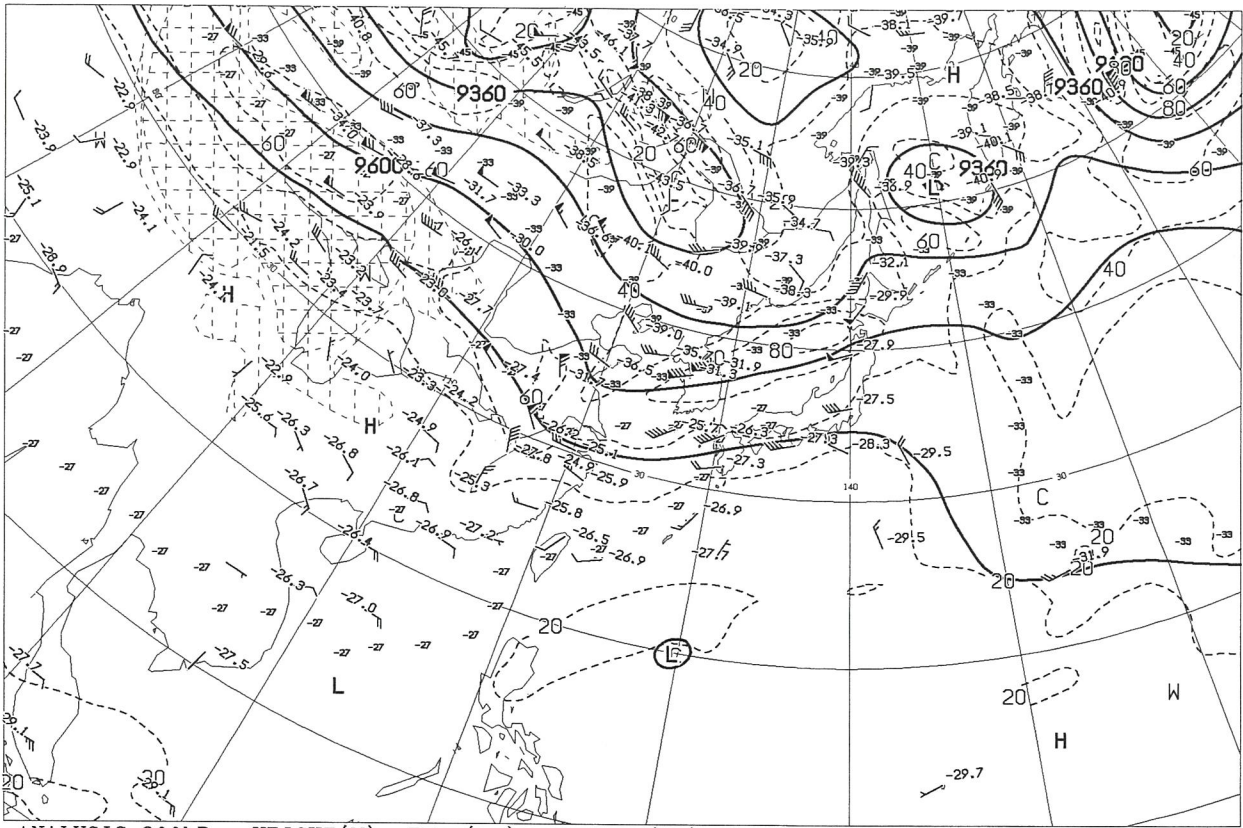
ANALYSIS 700hPa: HEIGHT(M), TEMP(°C), WET AREA::(T-TD<3°C)



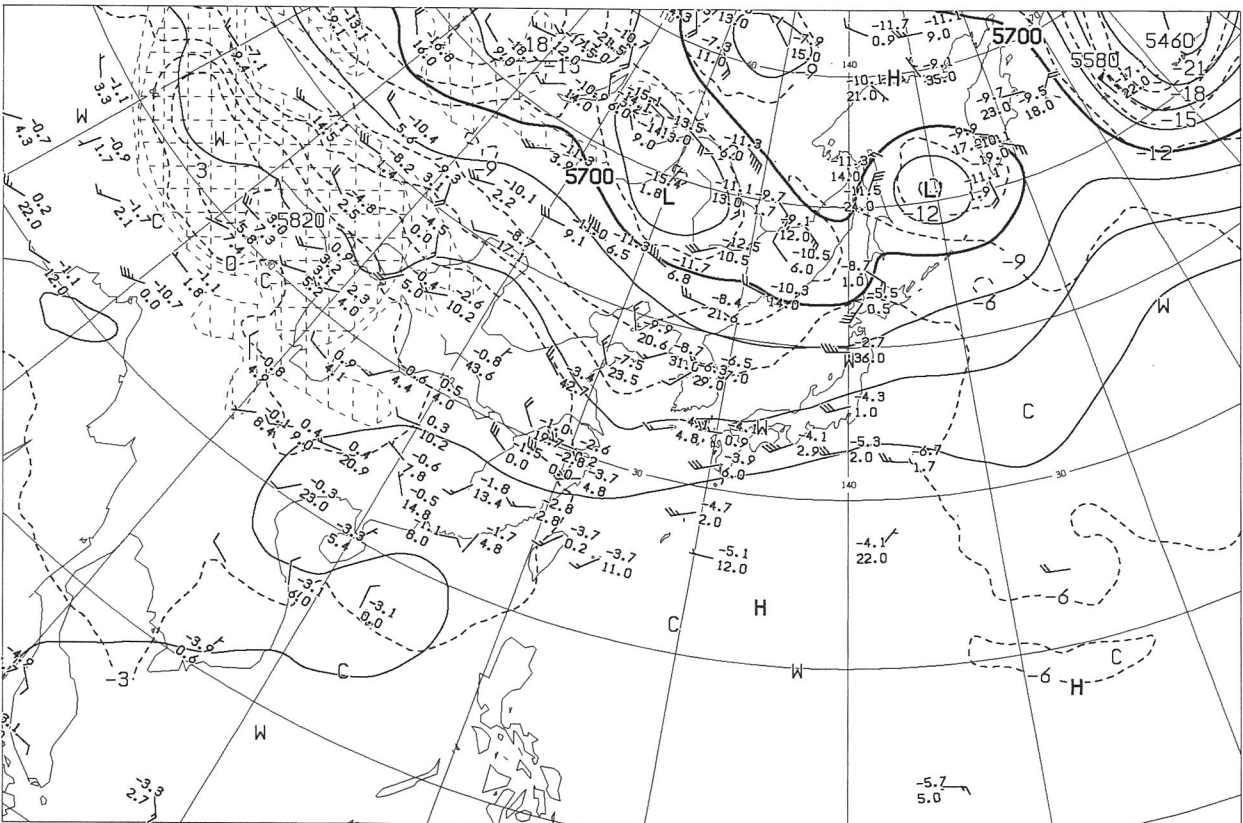
ANALYSIS 850hPa: HEIGHT(M), TEMP(°C), WET AREA::(T-TD<3°C)

AUPQ78 301200UTC JUN 2023

Japan Meteorological Agency

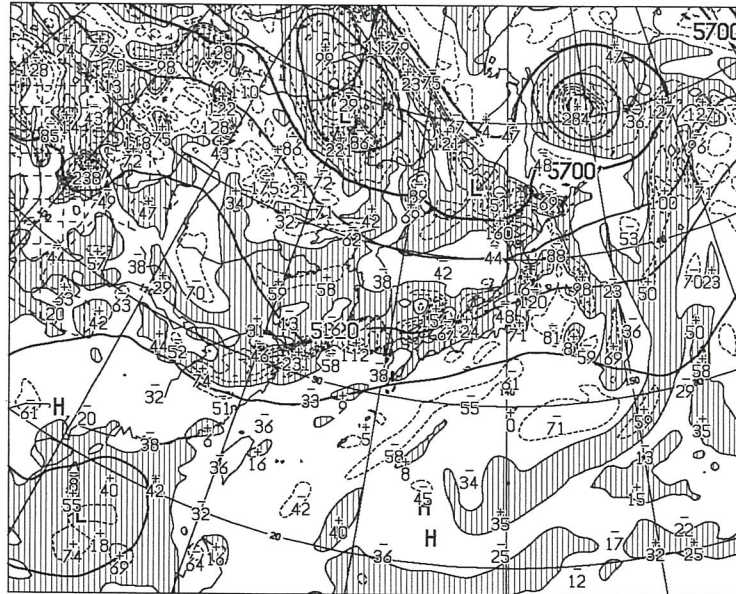


ANALYSIS 300hPa: HEIGHT(M), TEMP(°C), ISOTACH(KT)



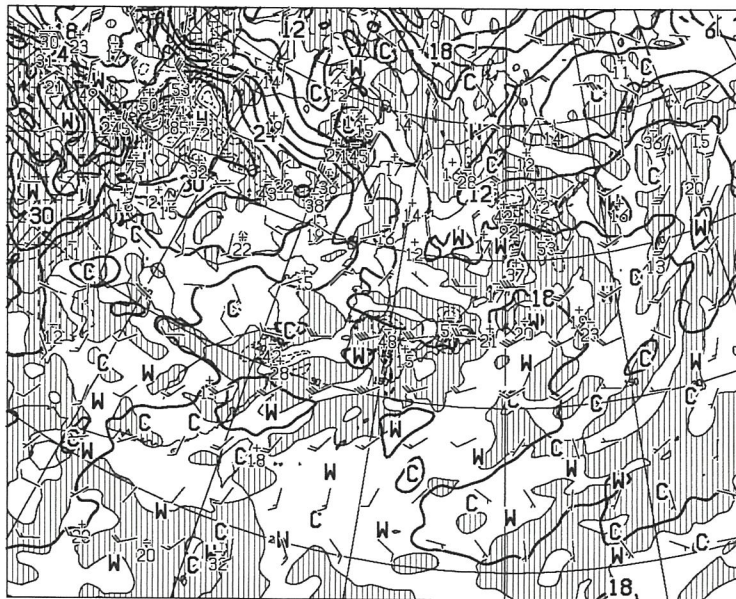
ANALYSIS 500hPa: HEIGHT(M), TEMP(°C)

AUPQ35 301200UTC JUN 2023



T=00

HEIGHT (M), VORT (10⁴M⁻⁶/SEC) AT 500hPa



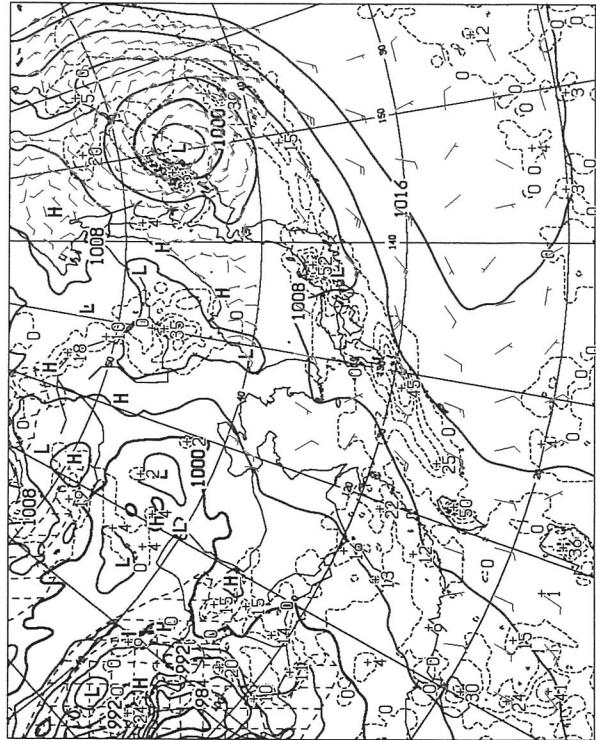
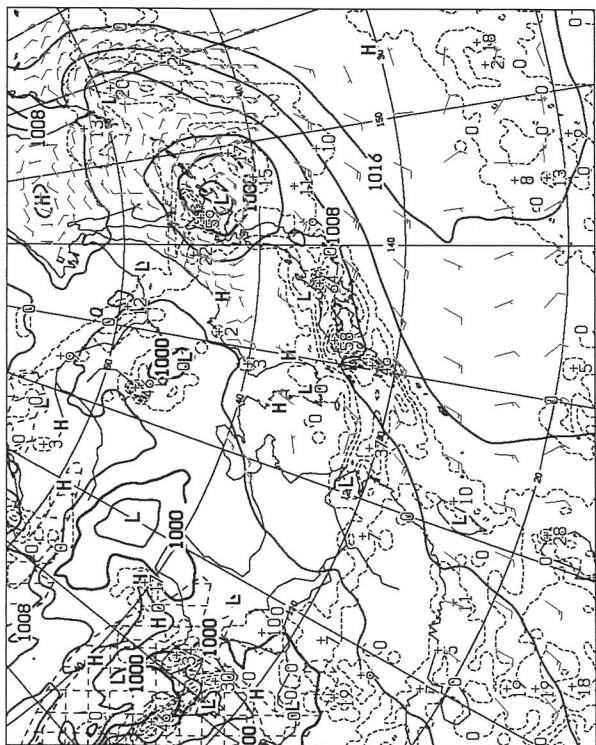
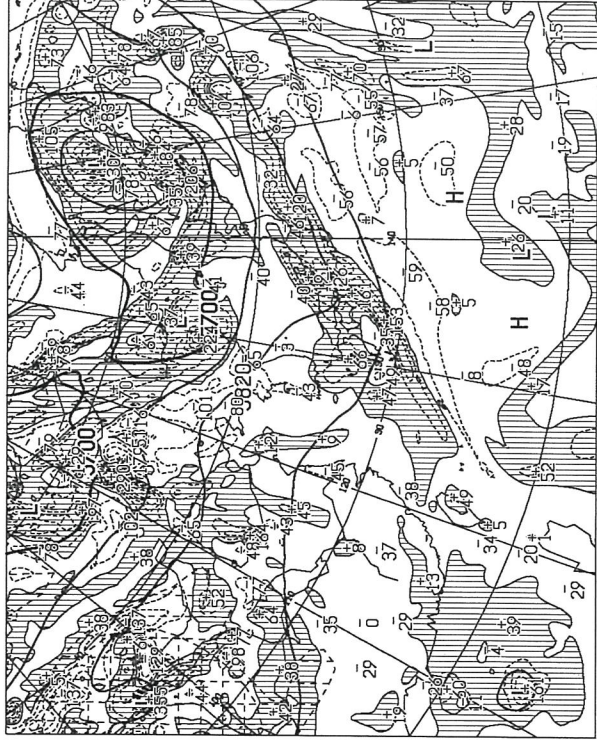
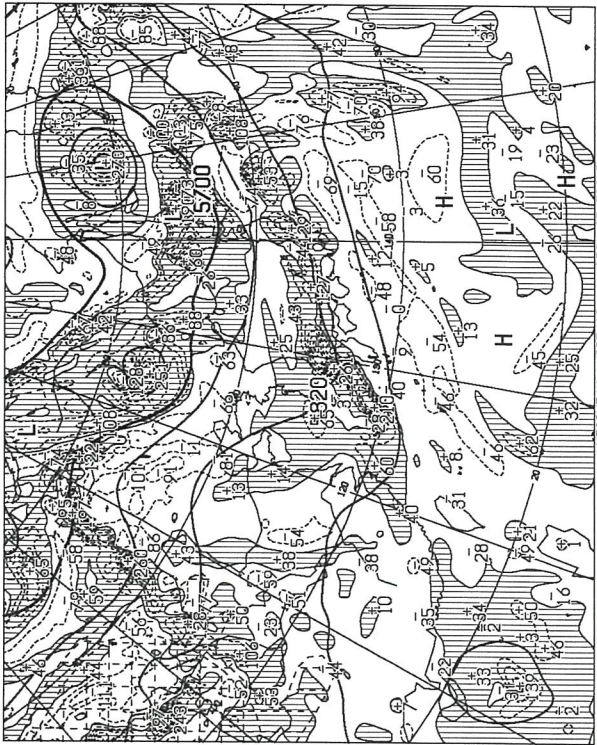
T=00

TEMP (C), WIND ARROW AT 850hPa
P-VEL (hPa/HR) AT 700hPa

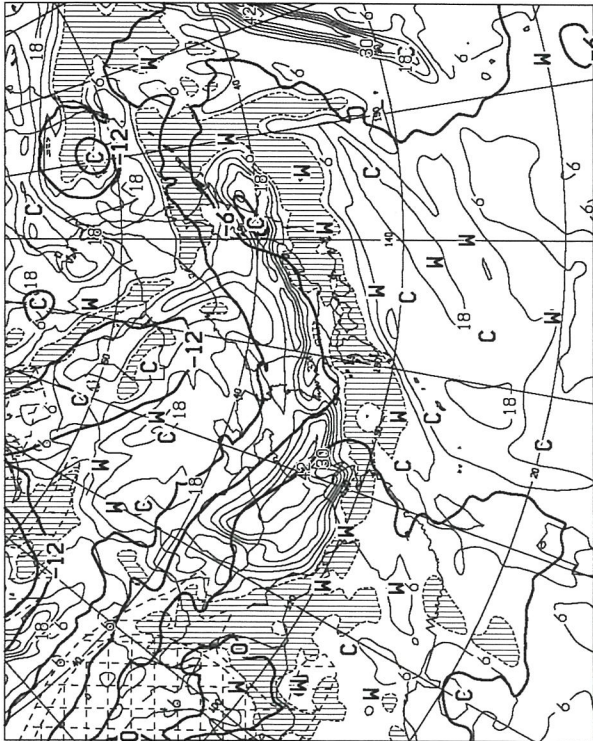
AXFE578

301200UTC JUN 2023

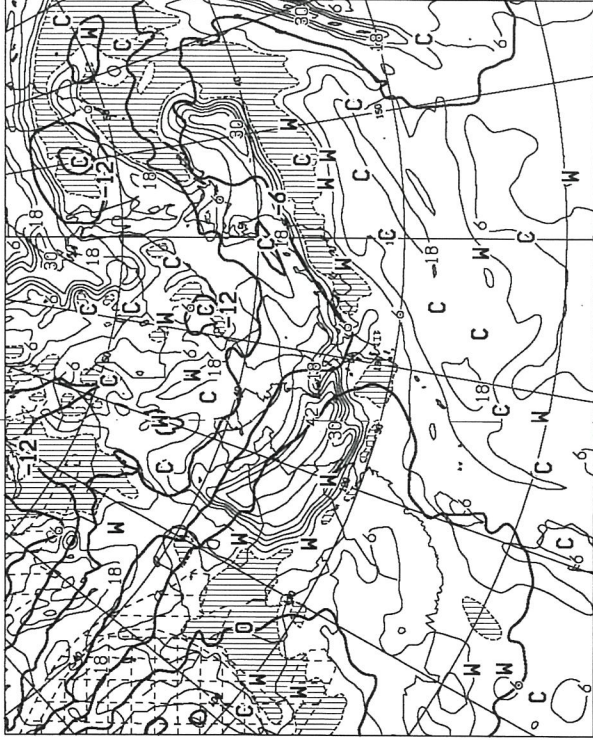
Japan Meteorological Agency



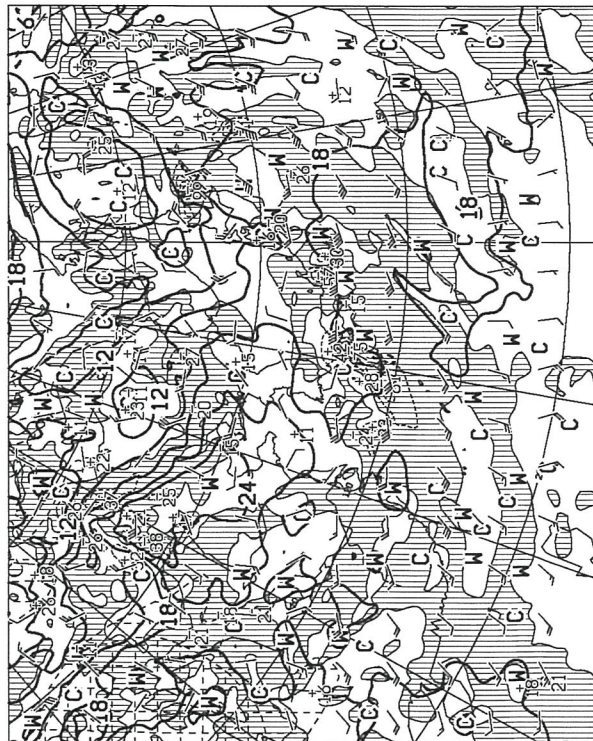
FXFE502 301200UTC JUN 2023



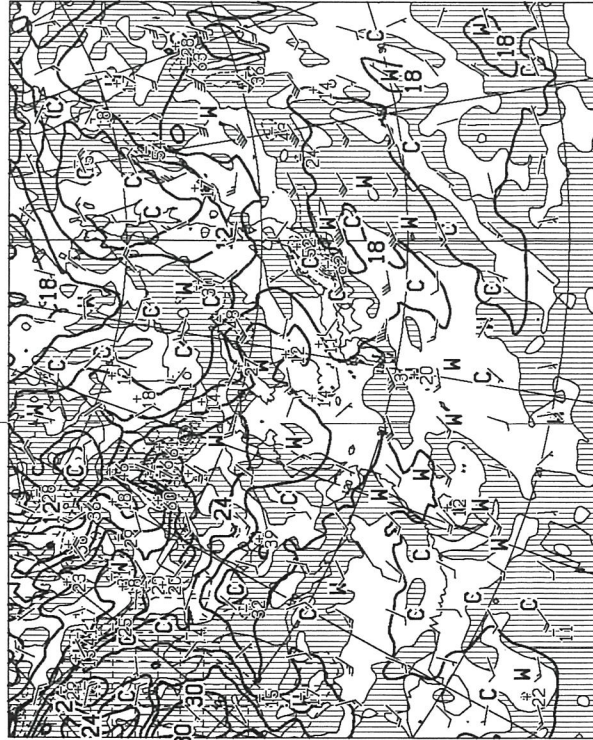
T=12 VALID 010000UTC TEMP (C) AT 500hPa
T-DI (C) AT 700hPa



T=24 VALID 011200UTC TEMP (C) AT 500hPa
T-DI (C) AT 700hPa



T=12 VALID 010000UTC TEMP (C) WIND PROB ON AT 500hPa
P-VEL (hPa/h) AT 700hPa



T=24 VALID 011200UTC TEMP (C) WIND PROB ON AT 500hPa
P-VEL (hPa/h) AT 700hPa

FXFE5782 301200UTC JUN 2023